



Noise Monitoring Result

Day Time (0700 - 1900hrs on normal weekdays)

Location: M1a - Footbridge at EX-Wanchai Harbour Road Sports Centre

Date	Time	Weather	Measurement Noise Level			Baseline Level	Construction Noise Level	Limit Level
			Leq	L10	L90	Leq	Leq	Leq
Unit: dB(A), (30-min)								
3/11/2017	13:10	Fine	82.8	84.0	75.6	72	82	75
9/11/2017	10:05	Fine	74.6	76.4	72.2	72	71	75
17/11/2017	09:55	Fine	76.9	79.1	73.6	72	75	75
22/11/2017	10:50	Fine	78.0	80.0	74.4	72	77	75

Location: M2b - Noon-day gun area

Date	Time	Weather	Measurement Noise Level			Baseline Level	Construction Noise Level	Limit Level
			Leq	L10	L90	Leq	Leq	Leq
Unit: dB(A), (30-min)								
3/11/2017	10:00	Fine	67.7	69.0	66.1	68	51	75
9/11/2017	10:50	Fine	67.0	68.5	65.0	68	67	75
17/11/2017	10:35	Fine	66.6	68.2	64.9	68	67	75
22/11/2017	08:10	Fine	68.5	70.3	66.1	68	61	75

Location: M3a - Tung Lo Wan Fire Station

Date	Time	Weather	Measurement Noise Level			Baseline Level	Construction Noise Level	Limit Level
			Leq	L10	L90	Leq	Leq	Leq
Unit: dB(A), (30-min)								
31/10/2017	09:15	Fine	65.5	67.1	63.3	69	66	75
9/11/2017	13:05	Fine	65.7	67.2	63.9	69	66	75
15/11/2017	09:20	Fine	64.5	66.2	62.3	69	65	75
21/11/2017	09:40	Fine	64.3	66.1	61.9	69	64	75

Location: M4b - Victoria Centre

Date	Time	Weather	Measurement Noise Level			Baseline Noise Level	Construction Noise Level	Limit Level
			Leq	L10	L90	Leq	Leq	Leq
Unit: dB(A), (30min)								
31/10/2017	09:55	Fine	68.0	69.7	65.0	67	60	75
9/11/2017	13:45	Fine	68.3	69.3	65.2	67	61	75
15/11/2017	10:00	Fine	65.0	66.7	62.4	67	65	75
21/11/2017	08:45	Fine	65.5	66.1	62.2	67	66	75

Location: M5b - City Garden

Date	Time	Weather	Measurement Noise Level			Baseline Level	Construction Noise Level	Limit Level
			Leq	L10	L90	Leq	Leq	Leq
Unit: dB(A), (30min)								
31/10/2017	10:40	Fine	73.4	74.7	71.0	68	72	75
9/11/2017	14:30	Fine	70.2	71.3	68.8	68	66	75
15/11/2017	10:45	Fine	70.9	72.2	69.4	68	68	75
21/11/2017	10:30	Fine	68.7	69.9	65.7	68	60	75

Location: M6 - HK Baptist Church Henrietta Secondary School

Date	Time	Weather	Measurement Noise Level			Baseline Level	Construction Noise Level	Limit Level
			Leq	L10	L90	Leq	Leq	Leq
Unit: dB(A), (30-min)								
31/10/2017	11:15	Fine	67.9	69.2	66.2	71	68	70
9/11/2017	15:10	Fine	67.5	68.7	66.1	71	68	70
15/11/2017	11:20	Fine	68.4	69.5	67.0	71	68	70
21/11/2017	11:10	Fine	67.6	68.9	66.0	71	68	70



Noise Monitoring Result

Day Time (0700 - 1900hrs on normal weekdays)

Location: M7e - International Finance Centre (Eastern End of Podium) (Reference Station)

Date	Time	Weather	Measurement Noise Level			Baseline Level	Construction Noise Level	Limit Level
			Leq	L10	L90	Leq	Leq	Leq
Unit: dB(A), (30-min)								
31/10/2017	14:55	Fine	69.6	70.5	65.0	67	66	N/A
6/11/2017	13:20	Fine	75.1	78.6	67.2	67	74	N/A
14/11/2017	14:00	Fine	66.1	67.7	63.2	67	66	N/A
21/11/2017	14:50	Fine	69.5	72.7	65.1	67	66	N/A

Location: M7w - International Finance Centre (Western End of Podium)

Date	Time	Weather	Measurement Noise Level			Baseline Level	Construction Noise Level	Limit Level
			Leq	L10	L90	Leq	Leq	Leq
Unit: dB(A), (30-min)								
31/10/2017	15:30	Fine	65.8	66.9	62.6	69	66	75
6/11/2017	13:55	Fine	66.8	68.1	64.3	69	67	75
14/11/2017	14:35	Fine	65.5	67.1	62.6	69	66	75
21/11/2017	15:25	Fine	65.5	67.1	63.5	69	66	75

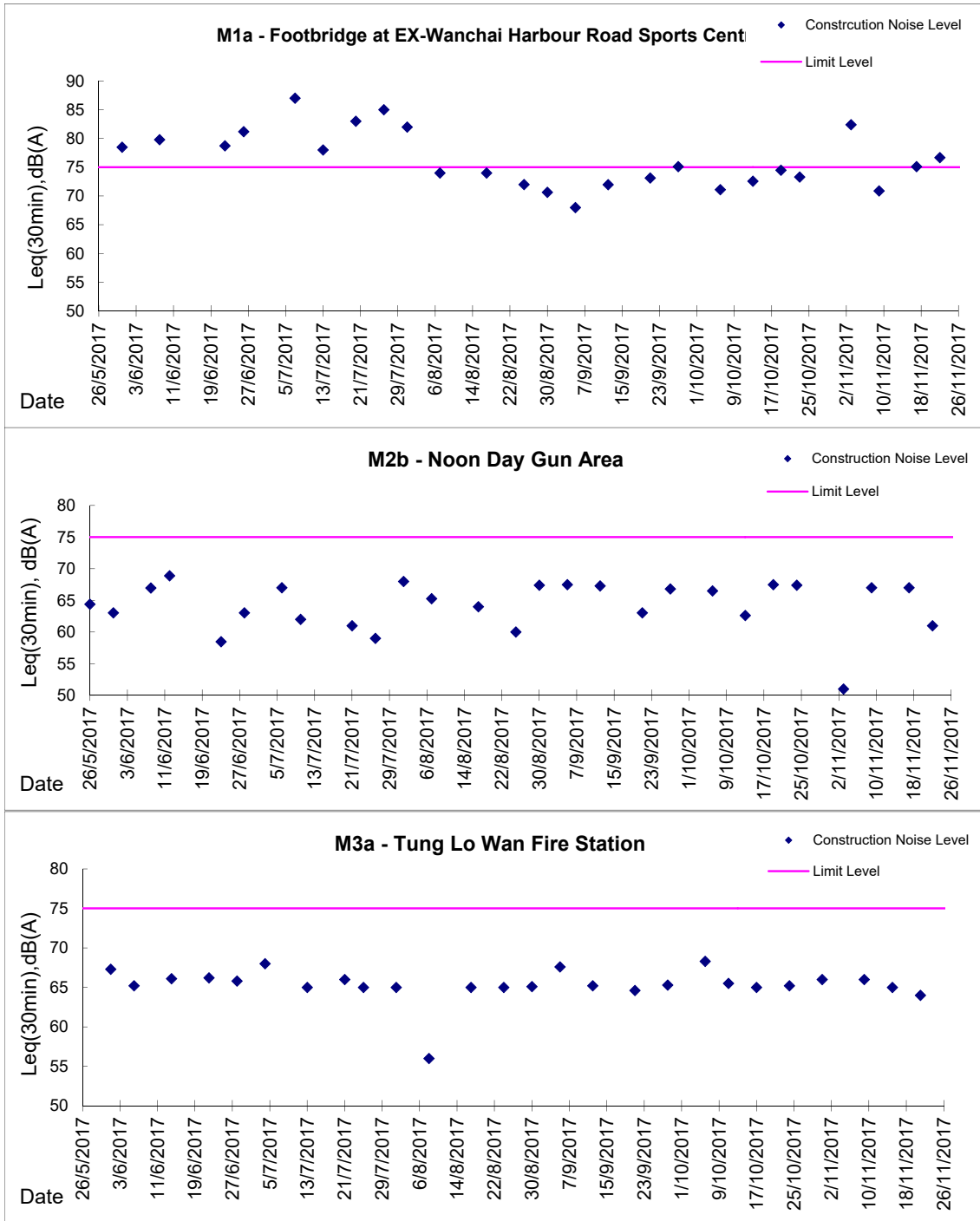
Location: M8 - City Hall

Date	Time	Weather	Measurement Noise Level			Baseline Level	Construction Noise Level	Limit Level
			Leq	L10	L90	Leq	Leq	Leq
Unit: dB(A), (30-min)								
31/10/2017	14:00	Fine	59.5	61.6	56.3	64	60	70
6/11/2017	14:45	Fine	59.7	61.9	56.0	64	60	70
16/11/2017	15:30	Fine	67.3	69.7	63.0	64	65	70
21/11/2017	13:50	Fine	64.9	66.9	60.6	64	58	70



Graphic Presentation of Noise Monitoring Result

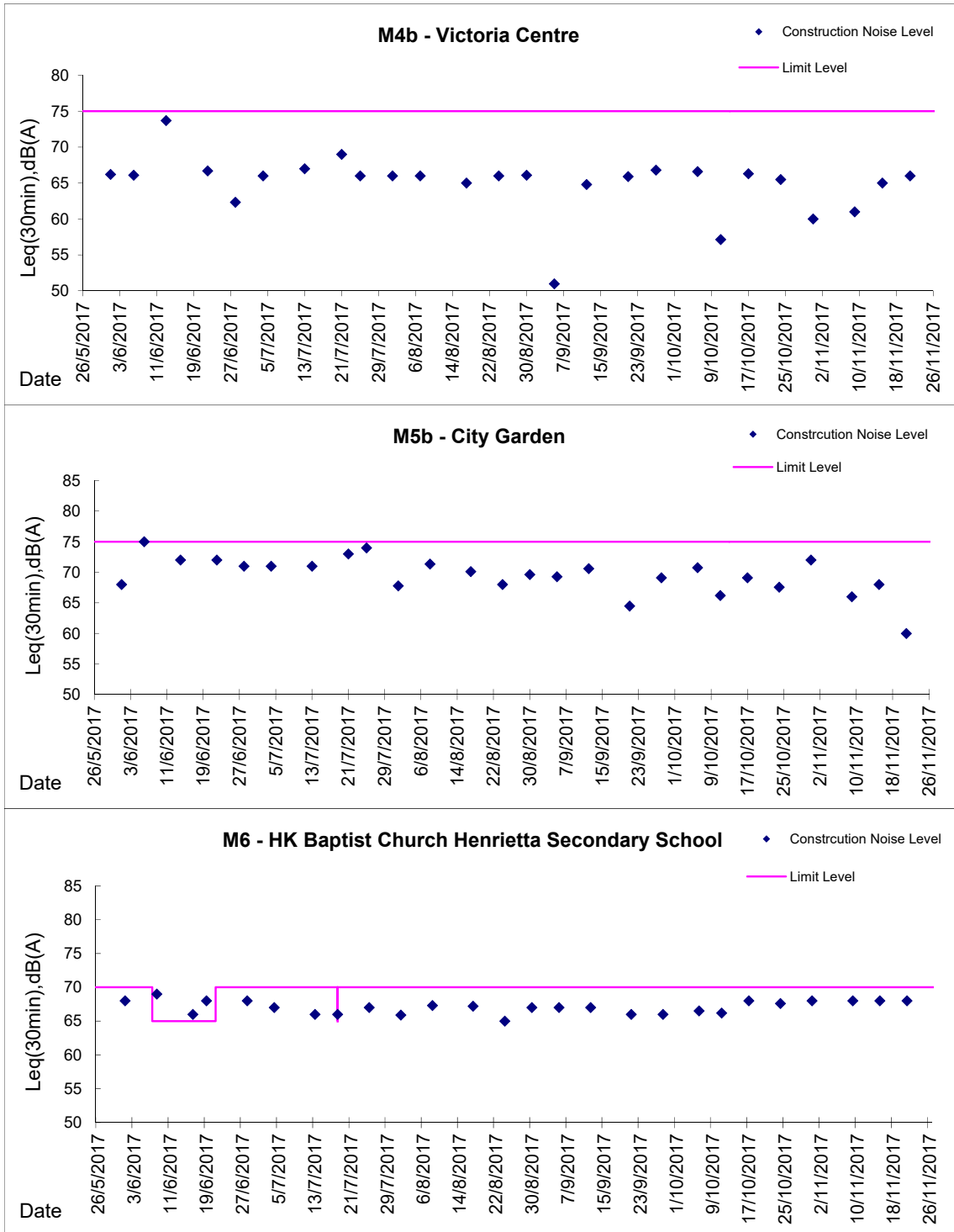
Day Time (0700 - 1900hrs on normal weekdays)





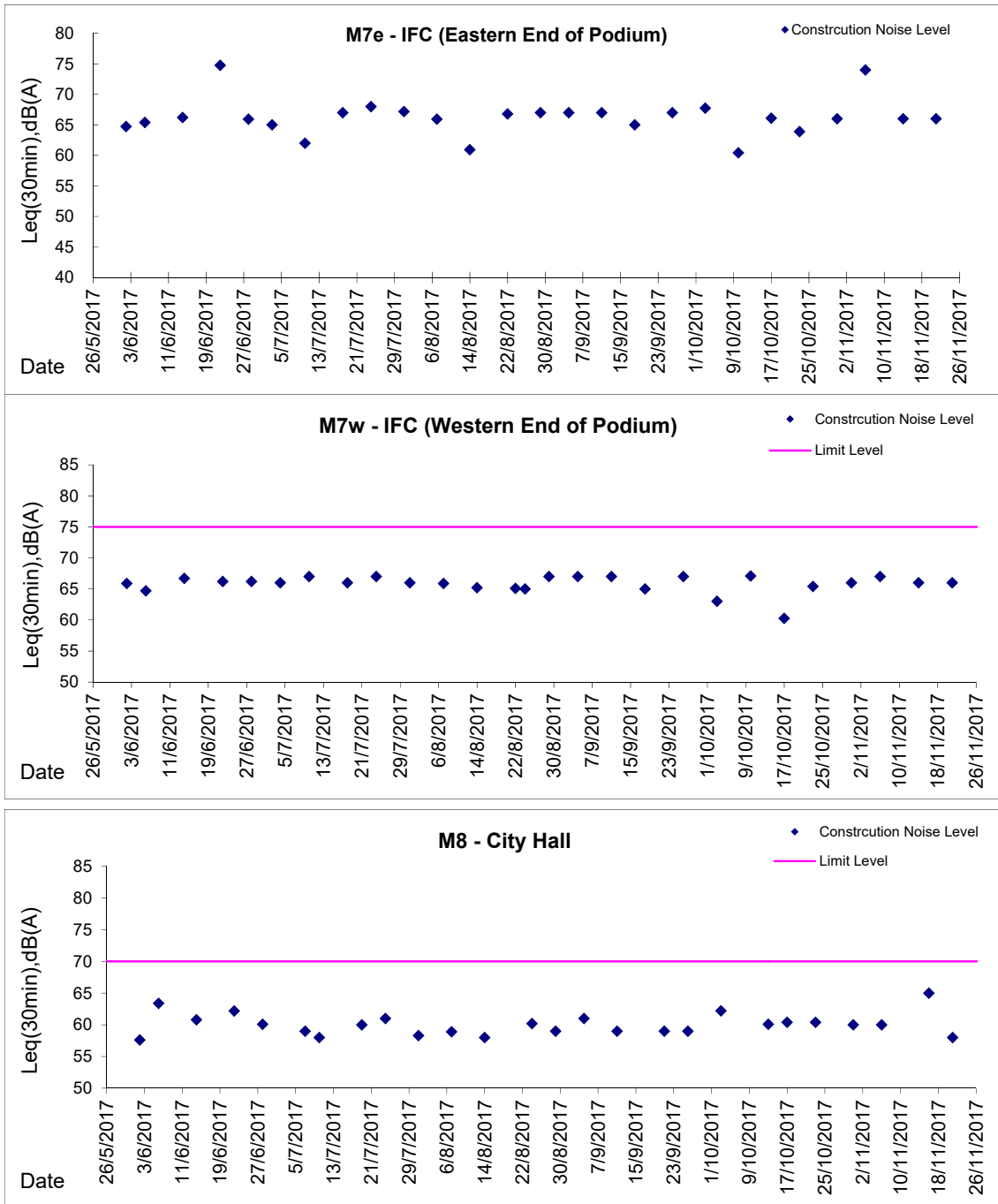
Graphic Presentation of Noise Monitoring Result

Day Time (0700 - 1900hrs on normal weekdays)



Graphic Presentation of Noise Monitoring Result

Day Time (0700 - 1900hrs on normal weekdays)



* Remark: M7e - IFC (Eastern End of Podium) is a reference monitoring station